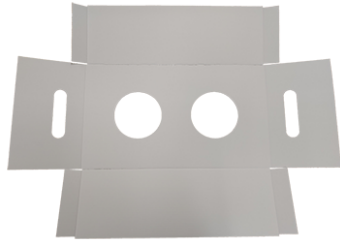
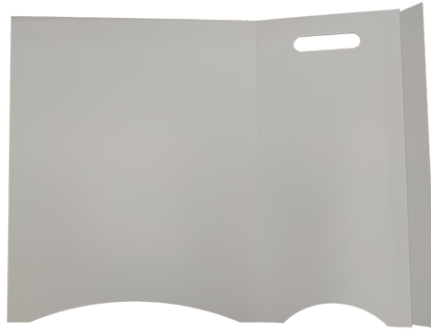


Cardboard Flower Display with Buckets

SKU:
SMCFDWHT
SMCFDSG
SMCFDCG



X1



X2



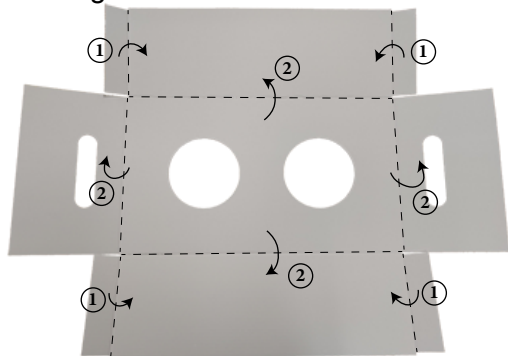
X2

Scan QR code to visit
the product page:

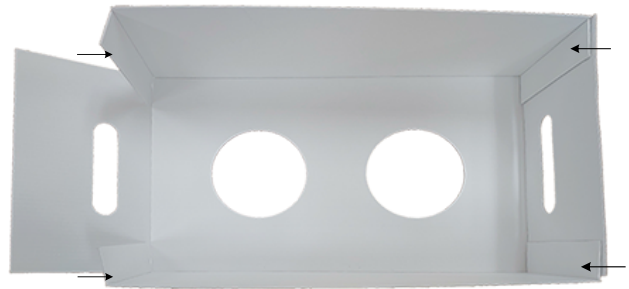


ASSEMBLY INSTRUCTIONS

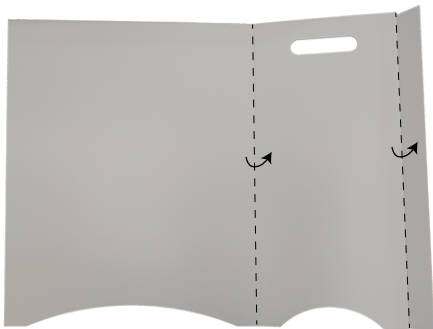
1. Fold small tabs up on the side first, then fold up 4 panels along creases.



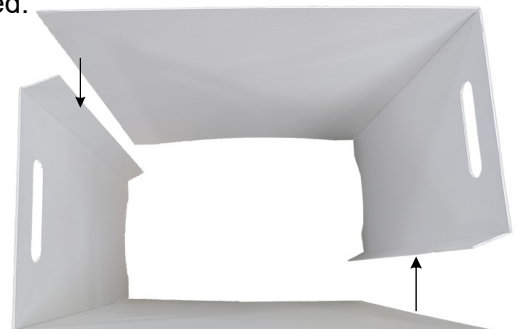
2. Peel off protective films on tapes and then tape against the inside of the side panels.



3. Fold up side panel and tab along creases on one body piece. Repeat the step for the 2nd body piece.



4. Peel off protective films and tape against the side panels. Make sure the connecting edges are lined-up and secured.



5. Place the assembled bucket holder on top of the display body.



6. Place the 2 flower buckets inside the display. The assembly is finished.



If you have any questions regarding our products, please visit us at www.displays2go.com or contact Displays2go customer service 844-221-3388.